



nara

CELEBRATING

25
YEARS

OF LICENSING SEMINARS

SEPTEMBER 11 – 13, 2017
HYATT REGENCY MINNEAPOLIS, MN

MISSION STATEMENT:

The mission of NARA is to promote the safeguarding of children, youth and adults through the effective formulation, application and enforcement of licensing statutes and rules; to develop educational materials and professional development resources on regulatory administration appropriate for the general public, licensing practitioners, and educational institutions; and to provide technical assistance to policy makers on the operation and management of the regulatory process.

TABLE OF CONTENTS

Sponsors & Exhibitors	3
Letter from NARA Leadership	4
Schedule at a Glance	6
Local Arrangements and Venue Map	7
Schedule of Events.....	8
Exhibitor Information.....	42
Clock Hours Certificate.....	43
NARA Leadership.....	45

CONNECT WITH NARA



@NARALicensing

Join the conversation with #2017NARA



www.facebook.com/naralicensing

Share your photos with us!



www.naralicensing.org



https://www.linkedin.com/groups/3681582/profile

THANK YOU TO OUR SUPPORTERS

Silver Seminar Sponsors & Exhibitors

We would like to thank our vendors for their support of the 25th Annual Licensing Seminar. We extend our sincere appreciation to our supporters for their partnership. We invite you to explore these human service focused organizations and join the National Association for Regulatory Administration in supporting them.



**Florida Center for
Interactive Media**
FLORIDA STATE UNIVERSITY



**NATIONAL CENTER ON
Early Childhood Quality Assurance**

Tara Lynne Orlowski, M.Ed.



EXHIBITOR NETWORKING

Exhibitors will be placed throughout the ballroom concourse throughout Monday and Tuesday. You are invited to connect with representative staff at any time throughout the day's activities. Get the most out of your seminar experience by connecting with exhibiting representatives. Please join NARA in welcoming these groups to the Annual Licensing Seminar.

Find exhibitor map and vendor directory starting on page 42.

WELCOME

On behalf of NARA, we welcome you to Minneapolis, and the 2017 NARA Silver Seminar celebration. This year culminates over 40 years of NARA work, and 25 years of licensing seminars, supporting and promoting the important work of regulators. This year we celebrate you and the work you do.

We have an exciting lineup of keynote speakers, workshops and numerous other opportunities to network, learn, and share ideas and successes with your colleagues.

On Monday, we will also be hosting our annual Think Tank sessions at 2:45 pm. Come join a facilitated dialogue and share your experiences and questions about the current trends, challenges and opportunities in Adult Care, Child Care, and Child Welfare.

On Monday night, the festivities continue with our Welcome Reception and Silent Auction celebrating 25 years of NARA Licensing Seminars! This event is not to be missed. Tuesday morning start your day with the speed networking sessions.

Later on Tuesday, please plan to join us for lunch and NARA's Annual Business Meeting at 11:45 am in the grand ballroom and join an extended conversation with us at 4:45 pm when we will be joined by NARA's Committee Chairs to dive deeper into what NARA has been doing and what we have planned.

Wednesday morning we will be celebrating Character Day with over 60,000 groups around the globe. This session will focus on the importance of character development from different perspectives.

Minneapolis also offers many amazing things to do - from the Mall of America, a short rail ride away, to visiting the Superbowl 52 location which will be host to the event in 2018. Please be sure to venture out and enjoy your surroundings.

Thank you for joining us and being a part of 25 years of Licensing seminar history! We hope you have an amazing time here in Minneapolis.

Tara Lynne Orlowski, M.Ed.
Board President

Jim Murphy
Executive Director

MAKE SEMINAR A SUCCESS



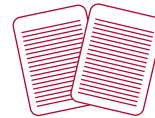
Membership Book

All new and current NARA members receive a complimentary book as part of your 2017 membership benefits. Be sure to stop by the NARA booth to claim yours. This year's book is *Start with Why* by Simon Sinek.



Silent Auction

Be sure to visit the silent auction items throughout the day on Monday. Bidding closes at the end of the Welcome Reception, 8pm. Proceeds support NARA's Norris E. Class Professional Development & Research Fund.



Handouts

All handouts and presentations provided by presenters prior to Seminar are available online at www.naralicensing.org. Handouts and presentations will be updated the week after Seminar with additional submissions from presenters.



WiFi Log In Information

Step #1: Choose wireless network **"Hyatt Meeting Space"**
Step #2: Open Browser
Step #3: Enter password **NARA2017** and click Enter
Step #4: You will be directed to the PSAV home page



Photography

Photographers will be present in almost all seminar activities. By virtue of your attendance, you irrevocably consent to and authorize the use of your image in photography by NARA. This includes any reproduction of the image(s) in any media whatsoever in connection with NARA's promotion of the program, materials and services. Please note, sessions are not to be video or audio-recorded by attendees.



Disability Policy

NARA wishes to ensure no individual with a disability is excluded, denied services, segregated or otherwise treated differently from other individuals because of the absence of auxiliary aids and services. If you need any of the aids or services identified in the Americans with Disabilities Act, please ask a NARA staff person or volunteer for assistance.



Clock Hours

A certificate for clock hours is available in this program on page 43 for individuals who attend all sessions.

Please Note: information presented and the opinions expressed in the education sessions do not necessarily reflect those of NARA. NARA does not endorse products or services of individuals or companies exhibiting at this conference. NARA makes no claims as to the accuracy of exhibitors' information or the safety or quality of products.

SCHEDULE AT A GLANCE

SUNDAY, SEPTEMBER 10

4 – 6 pmRegistration

MONDAY, SEPTEMBER 11

- 8 am – 5 pmRegistration Open
- 8:30 am – 4:45 pmExhibits Open
- 8:30 – 9 amContinental Breakfast
- 8:45 – 10:15 amWelcome & Opening Keynote Address
- 10:15 – 10:30 amMorning Break
- 10:30 am – 12 pmConcurrent Session A
- 12 – 1:30 pmLunch on your own
- 1:30 – 2:30 pmConcurrent Session B
- 2:30 – 2:45 pmAfternoon break
- 2:45 – 3:30 pmThink Tanks
- 3:45 – 4:45 pmConcurrent Session C
- 4:45 pmDinner on your own
- 6:30 – 8 pmWelcome Reception & Silent Auction

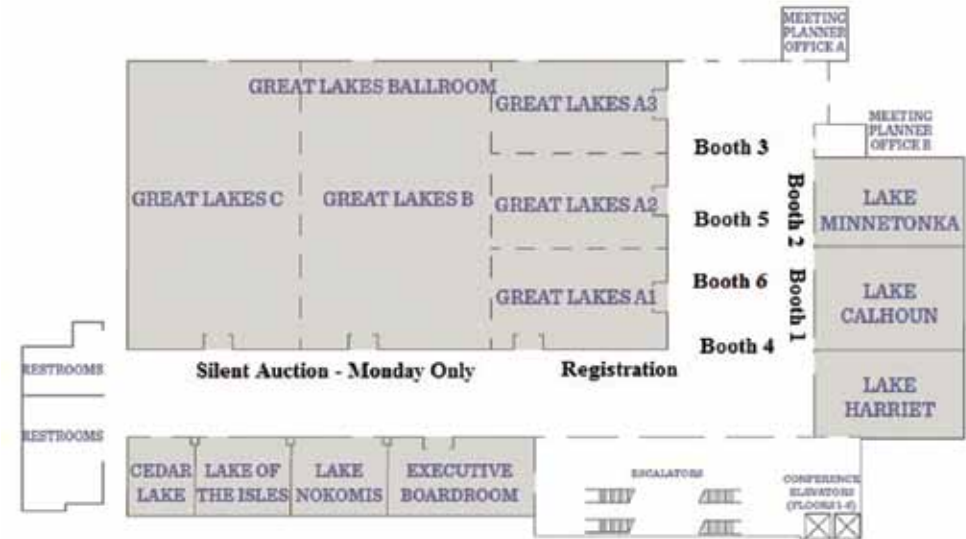
TUESDAY, SEPTEMBER 12

- 7:30 am – 4:30 pmRegistration Open
- 7:30 am – 4:30 pmExhibits Open
- 7:30 – 8:30 amContinental Breakfast
- 7:30 – 8:15 amSpeed Networking
- 8:30 – 10 amKeynote Address
- 10 -10:15 amMorning Break
- 10:15 – 11:45 amConcurrent Session D
- 12 – 1 pmNARA Luncheon & Membership Business Meeting
- 1:15 – 2:45 pmConcurrent Session E
- 2:45 – 3 pmAfternoon Break
- 3 – 4:30 pmConcurrent Session F
- 4:45 – 5:30 pmNARA Panel Discussion
- 5:30 pmDinner on your own

WEDNESDAY, SEPTEMBER 13

- 8 am – 12 pmRegistration Open
- 8 – 8:30 amContinental Breakfast
- 8:30 – 10 amConcurrent Session G
- 10 – 10:15 amMorning Break
- 10:15 – 11:30 amGeneral Session & Closing Remarks

LOCAL ARRANGEMENTS



4TH FLOOR MEETING ROOMS

GET TO KNOW MINNEAPOLIS!

Looking for a local bite from the Minneapolis foodies or sip from one of many local breweries while you're in town? Minneapolis is packed with bites and sips; history and artwork; exploration and relaxation within the downtown corridors. Choose your local arrangement from an endless list either on the NARA Seminar Page or conveniently found in your attendee bag.



8 am

REGISTRATION OPENS

10:30 am –
12 pm

CONCURRENT SESSION A

8:30 –
9 amCONTINENTAL BREAKFAST
& EXHIBITS OPEN FOR
NETWORKING

Location: 4th Floor concourse

8:45 –
10 amOPENING KEYNOTE
PRESENTATION

A1



Child Care Licensing for the Round-the-Clock Economy

Location: Lake Minnetonka

The round-the-clock economy in the U.S. presents complexities for the availability and affordability of child care. Licensing should be a part of our changing thinking that acknowledges economic realities and the workforce, while prioritizing the needs of the child. The 2014 CCDBG law offers important opportunities: priorities include increasing the supply of high-quality care, and requirements include targeting investments for non-traditional hours care and underserved communities with significant poverty. Join us for a discussion of challenges and solutions for the role of licensing content, monitoring and agency systems for families who count on child care during non-traditional hours.

Presented by:

Mary Beth Salomone Testa and Jacqueline Rose

Mary Beth Salomone Testa brings more than 15 years of experience in advocacy and policy development. Mary Beth's expertise is in connecting policy and practice, with depth of knowledge in child care regulations and legislation. Mary Beth has led advocacy campaigns across a variety of states and at the federal level, representing and building coalitions with child care providers, child care resource and referral agencies, home visiting programs, and the Children's Defense Fund. As a consultant, Mary Beth offers policy analysis, capacity building, and mobilization for federal and state policy and legislative affairs. Clients include local, state and national organizations. For the National Association for Family Child Care (NAFCC), Mary Beth works with providers, state and local associations and partners to advance NAFCC's mission to promote the power of family child care. Mary Beth is a regular presenter at national and statewide conferences and has been published in Exchange magazine. Mary Beth graduated from American University in Washington, DC and lives in Falls Church, Virginia.

Jacqueline Rose works to build collaborations for early education and child care systems and policy changes that effectively serves all children, families and the early childhood workforce. Jacqueline is the director of the military child care liaison initiative, a Department of Defense funded project to Child Care Aware of America (CCAoA). Jacqueline's experiences also includes work with the Microenterprise Development – Home-Based Child Care Initiative, funded by the Office of Refugee Resettlement; and licensing and quality initiatives work under the direction of the Hawaii State Child Care Administrator. Jacqueline is a past Head Start collaboration director in Hawaii, and a past Head Start fellow. She was a family child care manager for the Marine Corps. Jacqueline is a graduate of Clemson University, with a master's degree in early education from University of Hawaii.



Silent Impact

Location: Great Lakes BC

Through research, Joe has discovered the “we make our biggest impressions when we are not trying to be impressive.” That is what Silent Impact is all about. Your success and happiness are not related to your title or how many awards you have won, but to the impact you have on others. If there was a going-away party tonight at your office, which person would bring the biggest crowd? The person you just identified is keenly aware of the impact he or she is making on others. Joe will teach you how to ramp up your influence so you make better connections, stronger relationships, and win more often.



Presented by:

Joe Schmit

Joe Schmit is an author, award-winning sports broadcaster with KSTP-TV, community leader, and popular keynote speaker. Joe is a long-time youth mentor, committed to advocating for a number of community organizations, with Big Brothers and Big Sisters at the top of the list. He is a past president and board member of the Big Brothers and Big Sisters of the Greater Twin Cities. He has raised over \$3 million for the organization through the Joe Schmit Celebrity Golf Tournament which had a sixteen-year run. He was the winner of the 2000 Jim Kelly Distinguished Service Award from Big Brothers and Big Sisters, the winner of the 2001 Odyssey Award for commitment to youth mentorship, and the 2005 Juvenile Diabetes Research Fund (JDRF) Community Leader of the Year. He is past president and board member of the Fairway Foundation and has contributed time to many other charitable organizations. Joe and his wife Laura chaired a \$5 million capital campaign for VEAP, the largest food shelf in Minnesota.

A2



Let's Talk About Sex... Institutional Sexual Assaults - It Happens

Location: Great Lakes A1

Ensuring the safety and well-being of those in institutional care is crucial. Sexual assaults happen. Thus, identifying potential victims and perpetrators, as well as understanding the power of grooming the victim is important. It becomes incumbent upon those who regulate institutional care to understand the process and how to assist in the protection of potential victims by empowerment and training.

Presented by:

Patricia Adams

Patricia Adams, BA, is a professional regulator with the Office of the Bureau of Human Services Licensing. She is currently a Regional Licensing Administrator in the Southeast where she manages regulatory and licensing functions for Personal Care Homes. She has also worked as a Nursing Home Administrator. Patricia has worked in licensing since 2009, first as a licensing representative where she conducted all phases of licensing, provided technical assistance to maintain compliance and conducted training for the orientation program for administrators in Personal Care Homes. In 2014, she was promoted to Regional Licensing Administrator. Patricia is currently a member of the ninth class of the Department of Human Services Leadership Development Institute Program. Patricia has presented numerous workshops on Stress Management of a Caregiver and Regulator, Administrator Orientation for Personal Care Home Administrators and Staff burnout. Patricia was the sole caregiver for her mother from the time of her diagnosis until her death in 2010. Her mother had Alzheimer.

A3



Who Are You as a Regulator in Licensing?

Location: Great Lakes A2

The proper use of authority needs a lot of balancing as an essential skill for a licensing professional. This session will discuss the tools needed for a front line inspector on how to manage conflicts, identify the difference between rational and irrational conflict and ways on how to develop tools for clear thinking when conducting inspections. In addition, we will review how to impart a self-reflection and awareness of how others see yourself. This session is based on NARA's curriculum.

Presented by:

Sandi Wooters and Donna Sabo

Sandi Wooters, MHS, ACG, is currently the Southeast Regional Director for the Office of the Bureau of Human Service Licensing for the Commonwealth of Pennsylvania. She oversees all licensing and enforcement actions for Personal Care Homes, Assisted Living Homes, Children Residential Licensed Facilities, Community Residential Residences and Long Term Structured Residents for those with Mental Illness. Sandi has worked in licensing since 2007 first as a licensing representative where she conducted all phases of licensing for Personal Care Homes, and since 2012 the Regional Director. Sandi is a Masters prepared Gerontologist and worked primarily with the aging population from 1982 through

2007. Her experience includes assisting individuals to live independently in the community through coordinating services with 15+ hospitals throughout the Delaware Valley, as the Associate Administrator of Gero-psychiatry at the University of Pennsylvania from 1996 through 2002 she managed inpatient, outpatient, partial hospital and consultant services. Sandi then moved to California and from 2002 through 2007 she worked in the Assisted Living industry both as an administrator and as a corporate Director of Quality Assurance. Sandi also lived four months in an all Alzheimer's facility as a method to develop policies to help reduce resident to resident abuse. Sandi has presented at national conferences, including NARA, on maintaining regulatory compliance through Conducting Investigations to Determine Illegal Operations, Enforcement Strategies across the US and Providences, Provider Support, From Enforcement to Compliance and on simplified direct care staff training the "Walk About Workshops." Sandi also developed a program to reduce resident to resident abuse and hospitalization through the CLUB program, Caring Listening and Understanding Behaviors. This program was implemented in nursing homes and assisted living facilities throughout Pennsylvania and California. In 1995, Sandi was a delegate to the White House Conference on Aging for the state of Pennsylvania as an expert on the rural elderly of PA.

Donna Sabo holds a bachelor's degree in individual and family studies with an early child education emphasis from Pennsylvania State University and a master's degree in administration and supervision from Baldwin Wallace College. Donna has been a regulator for over 28 years; 23 years in Child Welfare Licensing, three years in Child Day Care Licensing working for the Ohio Department of Job and Family Services. She is currently employed by the Ohio Department of Mental Health and Addiction Services as a Behavioral Health Surveyor and provides training to adult and child care providers in Ohio on child welfare, child day care and adult care licensing rules and requirements. Donna currently serves on the NARA Board of Directors, Child Welfare Committee and Governance Committee. She is also a consultant and trainer for NARA. Dana has been a NARA Co-Consultant on a number of projects including: development of the Licensing Procedural Manual for the Louisiana Department of Children and Family Services Licensing and Regulatory Services for child placing agencies and day care facilities; development of Model Family Foster Home Standards for the Annie E. Casey Foundation in consultation with Generations United and American Bar Association Center on Children and Law; development of Licensing Indicator Policy and Procedure for Kansas Dept. of Health and Environment Child Care Licensing; and development of Interpretive Guides for Rhode Island Child Care Family Home rules. As a Foster Care Licensing Specialist, Donna has served on the following committees: Crisis Nursery Rules Development Task Force; Licensing Procedural Manual Committee, Licensing Transitional Team, Organizational and Diagnosis Team and the Physical Restraint Rule Development Committee. Donna is a member of The Ohio Association of Child and Youth Care Professionals (OACYCP) and has done training on licensing rules and procedures at the annual statewide OACYCP conferences.

A4
●**A Proactive Approach to Support Early Childhood Programs**
Location: Great Lakes A3

Do you work for children and families to create a safe and secure early childhood environment in your community? Are you curious on how to build a blended approach through your state's DHS and QRIS systems? This session will highlight a proactive approach to blending the two systems to create a strong support for your Early Childhood Programs. Attending this seminar will provide you the tools to begin a pilot within your community. Hear from Pennsylvania on their strategies and ongoing collaborations to incorporate both systems services for the providers, children and families they serve.

Presented by: **Sharon Arabia and Melissa Fuller**

Sharon Arabia began her work in Early Childhood Education in the mid-1980s as a Head Start Home Visitor. She continued her advocacy for children and families when she accepted a casework position with Allegheny County Children and Youth Services. Sharon began her career with the Commonwealth of Pennsylvania 24 years ago as a licensing representative for Office of Children Youth and Families, Day Care Division (now known as OCDEL) and is currently the Early Learning Program Regional Manager for Pennsylvania Department of Human Services, Office of Child Development and Early Learning (OCDEL), Bureau of Certification Services Western Region. During her time with the Commonwealth she earned a certificate in leadership through the Department of Public Welfare Leadership Institute. Sharon serves on regional leadership with a diverse group of stakeholders committed to improving quality and supports in the early learning communities and is actively involved with several initiatives within OCDEL. She has presented at the Early Childhood Education Conference at Penn State University on regulatory compliance. Sharon is committed to achieving quality early learning environments for children through developing teams and challenging historical assumptions and processes. Sharon has a BA in Sociology. She is an active member of NARA and currently serves on the Professional Development Committee.

Melissa Fuller has been in the Early Childhood Field since February 2000. She has a passion for creating safe high quality environments for children to learn and grow in. Currently, Melissa is the Southwest Regional Key Director in the state of Pennsylvania. Her current work is to support programs to reach their highest potential. The Southwest Regional Key offers Technical Assistance, Professional Development, Mentoring, and supports to Early Childhood Programs. Melissa serves on multiple committees for the advancements of the Early Childhood Field including Project LAUNCH, Ready Set Grow, and The Homeless Initiative. All of these committees work to service the community to create a safe, healthy, and high quality system for children. Melissa is a true advocate for children, families, and the Early Childhood field. She continues to be a strong voice for the Southwest Region of Pennsylvania.

A5
●**Weighting our WAC; Ready, Set, Go!**
Location: Lake Calhoun

In 2015, the Washington state legislature directed the Department of Early Learning (DEL) to align the child care licensing rules. DEL unified center and family home child care standards with the goal of making them easier to understand. DEL took this opportunity to revamp the agency's enforcement approach. DEL studied the leading policies in North America to devise a system that creates consistent enforcement, accounts for each provider's history, and "weighs" the unique risk of danger when a rule is broken. This presentation details DEL's weighting process and enforcement plan, which will be implemented in the fall of 2018.

Presented by: **Sonya Stevens, Tyler Farmer and Heather West**

Sonya Stevens is a Licensing Analyst for the Washington State Department of Early Learning. She is currently the project manager for the weighting process of the newly aligned proposed Washington Administrative Codes (WAC) for child care licensing oversight. Sonya will have completed her doctorate degree in education with a research study on the use and usability of a focused monitoring system in Washington State licensed childcare centers by July 2017. The study is firmly grounded in Dr. Richard Fiene's differential monitoring and risk assessment framework, giving Sonya specific content knowledge of the entire child care enforcement methodology used in the weighted WAC and enforcement process. Additionally, Sonya has an master's degree in adult education as well as a bachelor's degree in child development and family studies. She has served as an early learning educator, family advocate and home visitor, program director and adjunct faculty in Early Childhood Education at both Clark College in Vancouver, Washington, as well as Portland Community College in Portland, Oregon.

Tyler Farmer is an attorney working in the licensing department at the Washington State Department of Early Learning (DEL). Tyler earned his law degree from the Seattle University School of Law and received bachelor's degrees in both English and in Community, Environment, and Planning from the University of Washington. Prior to joining DEL, Tyler clerked for two separate judges on the Washington State Supreme Court. He was first introduced to state regulatory schemes while working for the nation's largest electronics recycling company. There, Tyler advised municipal and not-for-profit clients throughout the U.S. on creating "e-waste" recycling programs throughout California, Texas, Illinois, and North Carolina. In his spare time, Tyler plays water polo, travels as much as possible with his wife, and tends to two chickens and one cat at his home in Seattle.

continued

Heather West has a bachelor's degree in psychology and is currently employed by the Washington state Department of Early Learning (DEL) as one of four Licensing Regional Administrators. Heather not only grew up in a family that worked in human services but has dedicated the past 21 years of her career to children and families. Heather's experience began in Minnesota where she worked in a residential treatment facility for children focusing on behavioral and mental health, and later in a crisis shelter that provided crisis counseling and supports to children and families. After moving to Washington, her employment with the state began as an investigator with Child Protective Services. Following four years with investigations, she transitioned to child care licensing where she regulated child care homes, centers and school age programs. She later took on a role in DEL as the regions management analyst. Over the past three years, she has worked as a Regional Administrator and managed oversight of regulatory practices for licensed child care programs within her region. This history, along with being a wife and mother of two school age children, has continually spurred her passion for supporting families, child safety and quality child care for children.

1:30 – 2:30 pm

CONCURRENT SESSION B

B1



Balancing Licensing Workloads: Georgia's Specialized Approach

Location: Great Lakes A1

This session will provide an overview of the strategies the Child Care Services division of the Georgia Department of Early Care and Learning (DECAL) uses to support the division's responsibility of regulating and monitoring Georgia's licensed child care programs. These strategies include creating specialized work units to support regulatory functions and developing and annually implementing a weighted caseload system to effectively and efficiently distribute caseloads across Georgia's 159 counties.

Presented by:

Amy Page and Randy Hudgins

Amy Page currently serves as the manager of the Process & Policy Unit within the Child Care Services licensing division of the Georgia Department of Early Care and Learning (DECAL). She has worked with DECAL since July 2004. In that time she has also worked in the Applicant Services and Quality Improvement Units within the division. Before coming to DECAL, Amy worked with the child care resource and referral system in Georgia. She began her career in early childhood working in a group child care home during college. After graduating from Texas A&M University, she taught in Head Start. She currently lives in the north Georgia mountains with her husband and two young sons. Her hobbies include reading and saltwater fishing.

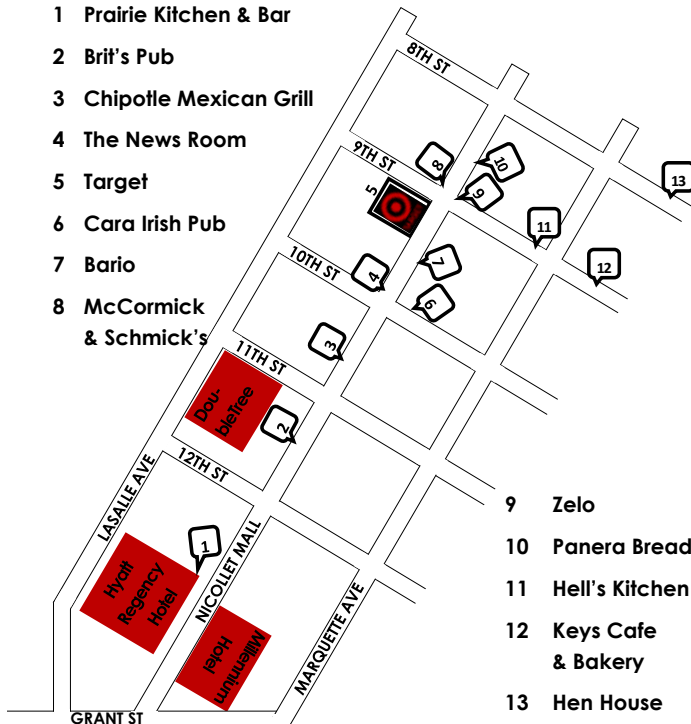
Randy Hudgins is a Senior Research and Policy Analyst at the Georgia Department of Early Care and Learning. He has worked with DECAL since February 2010. He is part of the department's research and analysis team that conducts and guides policy research and supports program implementation across DECAL's divisions and initiatives. Randy has worked extensively with the Child Care Services' Licensing division to analyze trends, develop pilot research, and support policy implementation. Randy earned a master's degree in public administration from the Andrew Young School of Policy Studies at Georgia State University. He is an avid Atlanta sports fan and he and his fiancé enjoy traveling, hiking, camping, and other outdoor adventures.

12 – 1:30 pm

LUNCH ON YOUR OWN

Food Outlets Within Walking Distance

- 1 Prairie Kitchen & Bar
- 2 Brit's Pub
- 3 Chipotle Mexican Grill
- 4 The News Room
- 5 Target
- 6 Cara Irish Pub
- 7 Bario
- 8 McCormick & Schmick's



- 9 Zelo
- 10 Panera Bread
- 11 Hell's Kitchen
- 12 Keys Cafe & Bakery
- 13 Hen House

B2

NARA Model Foster Care Standards - Implementation Discussion and Legislative Response**Location: Lake Harriet**

The American Bar Association Center on Children and the Law, the Annie E. Casey Foundation, Generations United and the National Association for Regulatory Administration have developed a set of clear and practical family foster home licensing standards that help ensure children in foster care are safe and promote the opportunity for relatives and non-related caregivers to become foster parents. This session will include an overview of the standards and an update on state implementation, as well as proposed federal legislative action involving the standards. In addition, discussion will include an Implementation Readiness Questionnaire that can be used to assess your state's readiness to implement the standards. These model family foster home licensing standards ensure that children: (1) live in safe and appropriate homes with child welfare and court oversight; (2) receive monthly financial assistance and supportive services; and (3) access the permanency option of assisted guardianship in the states and tribes that participate in the federal Guardianship Assistance Program. These standards, which are the only comprehensive national guidelines, fill a previous void by giving the federal government a set of clear and practical requirements to reference and guide states in their efforts to license homes. Under federal law, states have extraordinary flexibility to create family foster home licensing standards; it requires only that states develop guidelines "reasonably in accord" with national organizations' recommendations. The model standards are accompanied by an interpretative guide and crosswalk tool. The guide summarizes the purpose of each standard and provides instructions necessary for compliance determinations. The crosswalk tool helps states assess and align their current standards with the model standards. The model standards, which encompass all the necessary components to license a family foster home, should not be considered "minimum" criteria. These standards are flexible enough to respond to individual circumstances, but most importantly they help ensure that children in out-of-home care have safe and appropriate homes.

Presented by:

Donna Sabo, Joyce Debolt and Ana Beltran, JD

Donna Sabo holds a bachelor's degree in individual and family studies with an early child education emphasis from Pennsylvania State University and a master's degree in administration and supervision from Baldwin Wallace College. Donna has been a regulator for over 28 years; 23 years in Child Welfare Licensing, three years in Child Day Care Licensing working for the Ohio Department of Job and Family Services. She is currently employed by the Ohio Department of Mental Health and Addiction Services as a Behavioral Health Surveyor and provides training to adult and child care providers in Ohio on child welfare, child day care and adult care licensing rules and requirements. Donna currently serves on the NARA Board of Directors, Child Welfare Committee and Governance Committee. She is also a consultant and trainer for NARA. Dana has been a NARA Co-Consultant on a number of projects including: development of the Licensing Procedural Manual for the Louisiana

Department of Children and Family Services Licensing and Regulatory Services for child placing agencies and day care facilities; development of Model Family Foster Home Standards for the Annie E. Casey Foundation in consultation with Generations United and American Bar Association Center on Children and Law; development of Licensing Indicator Policy and Procedure for Kansas Dept. of Health and Environment Child Care Licensing; and development of Interpretive Guides for Rhode Island Child Care Family Home rules. As a Foster Care Licensing Specialist, Donna has served on the following committees: Crisis Nursery Rules Development Task Force; Licensing Procedural Manual Committee, Licensing Transitional Team, Organizational and Diagnosis Team and the Physical Restraint Rule Development Committee. Donna is a member of The Ohio Association of Child and Youth Care Professionals (OACYCP) and has done training on licensing rules and procedures at the annual statewide OACYCP conferences.

Joyce Debolt is currently employed as a Family Services Supervisor for a Kansas child placing agency where she is the supervisor of agency sponsoring of family foster homes initial and renewal licensing for foster, adoptive, and kinship families, responsible for training of families. She supervises the Interstate State Compact (ICPC) recommendation for placement of children in custody in states outside of Kansas and agency process accreditation for CARF, including updating and developing policies and procedures for program supervising. Joyce was employed by the Kansas Department of Health and Environment (KDHE) from 2007 to 2001 as Public Service Administrator II in Bureau of Child Care Licensing foster and residential care program. She has served on the Governor's BEST Team for foster family and child placing agency regulation revisions from 2004 - 2009. From 1998-2007, Joyce worked in the private sector for Saint Francis Community Services in various child welfare positions, beginning as a direct care provider and was promoted to Executive Director of the foster care program. Joyce serve as a NARA subject matter expert on development and presentations of Family Foster Home Standards with NARA consultants, ABA, Annie Casey, and Generations United.

Ana Beltran is an attorney and prior to moving to the West Coast served as the Director of the National Center on Grandfamilies. Ana is a national expert on Grandfamilies, authoring several Generations United publications on the subject and publishing articles in various publications and academic journals. Ana has spoken extensively about relatives raising children at national, state, and local conferences. As someone who was raised in part by her grandmother, Ana has a personal commitment to the families. Generations United is a co-author of the NARA Model Foster Care Standards.

B3

**Regulator Relief****Location: Great Lakes A2**

This session will identify the necessity to provide emotional and psychological relief for regulators to prevent burn-out. The session will offer techniques for self-implementation as well as what employers may offer.

Presented by:

Jacqueline L Rowe*continued*

Jacqueline Rowe has been a provider of long-term care since 1996 for nursing homes and personal care homes prior to joining the Pennsylvania Department of Human Services as the Director of the Bureau of Human Services Licensing in 2016. She has a master's degree in management and a bachelor's degree in health care administration. Still licensed as a nursing home administrator, Jacqueline finds her professional purpose in her oversight of the statewide regulatory responsibilities, bringing balance between the providers and regulatory requirements with an understanding of the individuals entrusted to their care.

B4

Alternatives to Enforcement: Using Innovation and Information to Improve Provider Performance

Location: Lake Nokomis

What factors do private businesses consider when making decisions about investing in their communities, determining staffing levels and pay and implementing services? We will discuss the effects of online customer reviews, making performance information available to the public and customer surveys in motivating business decision makers.

Presented by:

Jamie Simpson

Jamie is an Assisted Living Administrator who after 15 years working for private business healthcare providers, moved to state service, where she has run the state's assisted living licensing and survey program for the past twelve years. She has a master's degree from Northwest Nazarene University. Jamie also serves as a search dog for Idaho Mountain Search and Rescue.

B5

The Handshake: Unifying Information Systems Through Communication and Collaboration

Location: Great Lakes A3

This session will cover how Florida's Department of Children and Families' (DCF) Child Care Regulation Program Office addressed CCDBG requirements by collaborating with Florida's Office of Early Learning (OEL). Through this partnership, DCF and OEL established processes that allowed the sharing of information between the two offices and their information systems. These efforts resulted in a statewide training registry and the ability for licensing staff to inspect Florida's School Readiness providers and communicate the findings with Florida's Early Learning Coalitions.

Presented by:

Jeremy Lewis

Jeremy Lewis is a graduate of Florida State University with a degree in professional communication. In 2009, Jeremy joined the Florida Department of Children and Families as a business analyst for the information systems team. He now leads that team, which consists of three business analysts and seven software engineers. Throughout his nearly seven years of experience, Jeremy has navigated the decommissioning of a 13 year old legacy system, the recruitment of a new internal software development team and the construction of a brand new

licensing system. Jeremy is also an avid 3-D artist and is certified in 3-D modeling and animation by the state of New York.

B6

Licensing: the Foundation of Building the Supply of Child Care

Location: Lake Calhoun

Implementation of the federal child care law is underway. The law calls for efforts to increase the supply of high-quality care, and pushes the states to target investments for underserved communities. Child care licensing is the foundation of quality. Licensed family child care is part of the solution for state agency efforts to meet the needs of families, comply with new priorities, and build and connect systems in the states. In this session, we will work together to address challenges and opportunities, and discuss state policy choices to build the supply of licensed family child care.

Presented by:

Mary Beth Salomone Testa

Mary Beth Salomone Testa brings more than 15 years of experience in advocacy and policy development. Mary Beth's expertise is in connecting policy and practice, with depth of knowledge in child care regulations and legislation. Mary Beth has led advocacy campaigns across a variety of states and at the federal level, representing and building coalitions with child care providers, child care resource and referral agencies, home visiting programs, and the Children's Defense Fund. As a consultant, Mary Beth offers policy analysis, capacity building, and mobilization for federal and state policy and legislative affairs. Clients include local, state and national organizations. For the National Association for Family Child Care (NAFCC), Mary Beth works with providers, state and local associations and partners to advance NAFCC's mission to promote the power of family child care. Mary Beth is a regular presenter at national and statewide conferences and has been published in Exchange magazine. Mary Beth graduated from American University in Washington, DC and lives in Falls Church, Virginia.

B7

Where Are We Now? Lessons Learned from Georgia's Integrated Enforcement and Compliance System

Location: Lake Minnetonka

Georgia's child care licensing division has created a new licensing enforcement and compliance determination system. This new system integrates a risk-based, progressive approach that is clear, fair and predictable, taking into account severity of violations and a provider's ability to correct. It incorporates a balance of standardization for consistency and professional judgment to allow for individual factors. This session will focus on lessons learned during the first year of implementation of Georgia's Integrated Enforcement and Compliance System. We will provide an overview of this new enforcement and compliance system. We will show how the chart illustrates a systematic format that is fair and transparent, supports a licensing system focused on both regulation and support, and articulates the complexity of 21st century early education. This session will include some of the unforeseen circumstances encountered during the first year.

continued

Presented by: **Rhonda Parker and April Rogers**

Rhonda Parker has worked with Bright from the Start: Georgia Department of Early Care & Learning for 17 years. She is currently serving in the Child Care Services Licensing Division.

April Rogers has worked with Bright from the Start: Georgia Department of Early Care & Learning for 11 years. She is currently serving in the Child Care Services Licensing Division.

2:45 –
3:30 pm

THINK TANKS

Adult Care Think Tank: Lake Minnetonka
Child Care Think Tank: Great Lakes A1
Child Welfare Think Tank: Lake Harriet

Think Tanks are designated space for you to collaborate and communicate with colleagues about important topics impacting your field and process what you are learning through the conference. These sessions are purposely not facilitated to allow ample brainstorming and authentic communication and idea sharing.

3:45 –
4:45 pm

CONCURRENT SESSION C

C1
●

Georgia's Research-Based Approach to Monitoring License-Exempt Providers
Location: Great Lakes A1

This session will provide an overview of a pilot project conducted by Georgia's child care licensing division which informed the development of on-going monitoring processes to meet CCDF requirements. The six-month project collected data from nearly 500 programs that serve children and are exempt from licensure throughout the state of Georgia. A leading national research firm analyzed the data, providing feedback on the state of operations within exempt programs. Information garnered guided the development of policy and processes for annual on-going monitoring of license-exempt programs receiving subsidy funding. The technical systems created to monitor these programs will also be discussed.

Presented by: **Amy Page and Melissa Davis**

Amy Page currently serves as the manager of the Process & Policy Unit within the Child Care Services licensing division of the Georgia Department of Early Care and Learning (DECAL). She has worked with DECAL since July 2004. In that time she has also worked in the Applicant Services and Quality Improvement Units within the

division. Before coming to DECAL, Amy worked with the child care resource and referral system in Georgia. She began her career in early childhood working in a group child care home during college. After graduating from Texas A&M University, she taught in Head Start. She currently lives in the north Georgia mountains with her husband and two young sons. Her hobbies include reading and saltwater fishing.

After starting her career in the financial services world, Melissa changed gears into the human services field when she experienced a crisis of not being able to find child care for her children. Since then, Melissa has worked in the Early Care and Education spectrum for 24 years, first as a child care provider, then trainer/consultant; moving to licensing consultant, region coordinator, QRIS Assessor, Technical Assistance unit manager, and now in leadership on the Child Care Services team. Melissa serves as the Director of Quality Operations overseeing the units for Applicant Services, Exemptions, and Quality Improvement and Training. She holds a teaching certificate and a master's degree in adult education with a Birth-5 Education endorsement. In her free time, Melissa enjoys her three granddaughters, attending festivals and concert events, yoga and sampling restaurant cuisine.

C2
●

Creating Successful Organizational Practices for Administrators: Useful Tools and Techniques for Child Care Center Compliance.
Location: Great Lakes A3

This session will focus on the administrative aspect of operating a compliant child care center. We will discuss organizational tools to assist with child and adult files as well as facility paperwork required to meet state licensing regulations. Participants will gain ideas on how to incorporate and assist child care centers with this process and will have a chance to view the organizational tools developed for Riley County, Kansas Child Care Centers. Participants will gain an understanding of the quality improvement process and how that aligns with the strategic goals of the licensing agency.

Presented by: **Breva Spencer, LBSW**

Breva Spencer is a Licensed Bachelor of Social Worker (LBSW) in the state of Kansas and Virginia. She received her bachelor's degree in social work at the University of Kansas in 2004. She began her career in child welfare with the Kansas Department for Children and Families in 2006. For the next three years, she worked as a Social Work Specialist conducting investigations, specifically, child sexual abuse cases. She left child welfare in 2009, and began working for the Fort Belvoir, Virginia, Family Advocacy Program, as a Victim Advocate (VA) and Sexual Assault Response Coordinator (SARC). In 2011, she began working for the Riley County Health Department as the Child Care Licensing (CCL) Surveyor and shortly thereafter became the CCL Program Coordinator. She has developed and presented many trainings throughout her career. She developed and implemented a domestic violence and sexual assault prevention training for the Fort Belvoir installation and over 4,000 soldiers, Garrison Commander's and civilian employees

continued

attended. Most recently, she developed and implemented an organization training for child care facilities, one specific to home based providers and another for center-based facilities. She is passionate about organization and assisting child care facilities in becoming compliant with licensing laws and regulations.

C3



The Integration of Trauma Informed Care into the Licensing Process for Child Welfare, Child Day Care and Adult Care

Location: Lake Minnetonka

Trauma-informed care (TIC) is an approach that explicitly acknowledges the role trauma plays in people's lives. TIC means that every part of an organization or program understands the impact of trauma on the individuals they serve and promotes cultural and organization change in responding to the consumers/clients served. Licensing staff need to be aware of the role trauma plays during a licensing assessment, and how the applicant's responses and reactions may be driven by Adverse Childhood Experiences (ACES). The workshop will discuss the ACES Study and how to use the self assessment tool for your licensing staff as well as the Agency Self Assessment for TIC. The Agency Self-Assessment for Trauma-Informed Care is intended to be a tool that will help you assess your organization's readiness to implement a trauma-informed approach. Honest and candid staff responses can benefit your agency by helping to identify opportunities for program and environmental change, assist in professional development planning, and can be used to inform organizational policy change. The Six Key Principles of a Trauma-Informed Approach will be discussed from a licensing assessment perspective. These include: safety; trustworthiness and transparency, peer support; collaboration and mutuality; empowerment, voice and choice; and cultural, historical and gender issues.

Presented by:

Donna Sabo and Joyce Debolt

Donna Sabo holds a bachelor's degree in individual and family studies with an early child education emphasis from Pennsylvania State University and a master's degree in administration and supervision from Baldwin Wallace College. Donna has been a regulator for over 28 years; 23 years in Child Welfare Licensing, three years in Child Day Care Licensing working for the Ohio Department of Job and Family Services. She is currently employed by the Ohio Department of Mental Health and Addiction Services as a Behavioral Health Surveyor and provides training to adult and child care providers in Ohio on child welfare, child day care and adult care licensing rules and requirements. Donna currently serves on the NARA Board of Directors, Child Welfare Committee and Governance Committee. She is also a consultant and trainer for NARA. Dana has been a NARA Co-Consultant on a number of projects including: development of the Licensing Procedural Manual for the Louisiana Department of Children and Family Services Licensing and Regulatory Services for child placing agencies and day care facilities; development of Model Family Foster Home Standards for the Annie E. Casey Foundation in consultation with Generations United and American Bar Association Center on Children and Law; development of Licensing Indicator Policy and Procedure for Kansas Dept. of Health and Environment Child Care Licensing; and development of Interpretive Guides for

Rhode Island Child Care Family Home rules. As a Foster Care Licensing Specialist, Donna has served on the following committees: Crisis Nursery Rules Development Task Force; Licensing Procedural Manual Committee, Licensing Transitional Team, Organizational and Diagnosis Team and the Physical Restraint Rule Development Committee. Donna is a member of The Ohio Association of Child and Youth Care Professionals (OACYCP) and has done training on licensing rules and procedures at the annual statewide OACYCP conferences.

Joyce Debolt is currently employed as a Family Services Supervisor for a Kansas child placing agency where she is the supervisor of agency sponsoring of family foster homes initial and renewal licensing for foster, adoptive, and kinship families, responsible for training of families. She supervises the Interstate State Compact (ICPC) recommendation for placement of children in custody in states outside of Kansas and agency process accreditation for CARF, including updating and developing policies and procedures for program supervising. Joyce was employed by the Kansas Department of Health and Environment (KDHE) from 2007 to 2001 as Public Service Administrator II in Bureau of Child Care Licensing foster and residential care program. She has served on the Governor's BEST Team for foster family and child placing agency regulation revisions from 2004 - 2009. From 1998-2007, Joyce worked in the private sector for Saint Francis Community Services in various child welfare positions, beginning as a direct care provider and was promoted to Executive Director of the foster care program. Joyce serve as a NARA subject matter expert on development and presentations of Family Foster Home Standards with NARA consultants, ABA, Annie Casey, and Generations United.

C4



Maintaining Regulatory Compliance for Non-Medical Staff Administering Medications to Vulnerable Populations

Location: Lake Calhoun

The Commonwealth of Pennsylvania regulates non-medical staff administering medications to vulnerable populations living in licensed homes. The staff must pass the Departments Medication Administration Training program prior to administering medications independently and complete annual practicums to maintain the certification. This session will review the concepts of the train the trainer Medication program, how does the train the trainer train the non-medical staff using online and face to face training processes and how licensing measures compliance. How does the state ensure protection by allowing non-medical staff to administer medications.

Presented by:

Sandi Wooters and Sheila Page

Sandi Wooters, MHS, ACG, is currently the Southeast Regional Director for the Office of the Bureau of Human Service Licensing for the Commonwealth of Pennsylvania. She oversees all licensing and enforcement actions for Personal Care Homes, Assisted Living Homes, Children Residential Licensed Facilities, Community Residential Residences and Long Term Structured Residents for those with Mental Illness. Sandi has worked in licensing since 2007 first as a licensing representative where she conducted all phases of licensing for Personal

continued

Care Homes, and since 2012 the Regional Director. Sandi is a Masters prepared Gerontologist and worked primarily with the aging population from 1982 through 2007. Her experience includes assisting individuals to live independently in the community through coordinating services with 15+ hospitals throughout the Delaware Valley, as the Associate Administrator of Gero-psychiatry at the University of Pennsylvania from 1996 through 2002 she managed inpatient, outpatient, partial hospital and consultant services. Sandi then moved to California and from 2002 through 2007 she worked in the Assisted Living industry both as an administrator and as a corporate Director of Quality Assurance. Sandi also lived four months in an all Alzheimer's facility as a method to develop policies to help reduce resident to resident abuse. Sandi has presented at national conferences, including NARA, on maintaining regulatory compliance through Conducting Investigations to Determine Illegal Operations, Enforcement Strategies across the US and Providences, Provider Support, From Enforcement to Compliance and on simplified direct care staff training the "Walk About Workshops." Sandi also developed a program to reduce resident to resident abuse and hospitalization through the CLUB program, Caring Listening and Understanding Behaviors. This program was implemented in nursing homes and assisted living facilities throughout Pennsylvania and California. In 1995, Sandi was a delegate to the White House Conference on Aging for the state of Pennsylvania as an expert on the rural elderly of PA.

Sheila Page is the Director of Operations for the Bureau of Human Services for the Commonwealth of Pennsylvania. Sheila has been with Licensing since 2007 and prior to her position as the Director of Operations was the Regional Director for the Western Licensing Division. Sheila has a master's degree.

C5
● ● ●

Using Data from Information Systems for Program Planning, Evaluation and Optimizing Limited Staff Resources

Location: Great Lakes A2

Performance measurement is a critical element of accountability for public resources. In human care licensing programs, a significant amount of "resources" are vested in Licensing Staff. It is important for managers of government programs to show what was received from the use of these staff resources and whether the public is receiving an acceptable benefit. Information systems that support business operations routinely collect data that can be used for program planning, performance evaluation and to optimize limited staff resources. This presentation will provide examples of how existing data sets can be used, show ways to visually tell a story, and provide an opportunity for session participants to share ideas.

Presented by: **Steven Eng and Sheri Obera**

Steven Eng has over 36 years experience working in public health - primarily in regulatory licensing of community care facilities for adults and children (including investigations), environmental health, communicable disease surveillance and outbreak management, and health promotion. As a volunteer Environmental Quality Panel Chair, he has contributed to the development of the 2002 and 2011 editions of "Caring for Our Children" which are national health and safety performance standards for out of home child care. He has delivered training on the Licensing

Complaint Investigation Chapter from the NARA Licensing Curriculum to several states and has contributed volunteer time to support the NARA organization as a member since 1979, and in various Board positions over the years. Steven has held an interest in computer programming since high school and the application of information systems in regulatory settings during his work career. He has a passion for finding creative solutions to solve problems or make things better for people. Steven holds a master's degree in public health from the University of Washington in Seattle and currently is the Manager of Technology, Planning & Integration in the department of Population & Public Health at Fraser Health located in British Columbia, Canada.

Sheri Obera was a Licensing Officer for six years, working exclusively with child care facilities. Since 2011 she has worked as an Information Specialist supporting the operational needs of the Community Care Facilities Licensing program, with a focus on database development and data analysis. An Early Childhood Educator for 18 years, Sheri also holds a Montessori Teaching Certificate, Elementary Teaching Certificate, and degrees in linguistics, psychology and children's literature.

C6
●

Senior Living 2025 - The Future of Senior Living
Location: Lake Harriet

The senior living industry has an opportunity to accommodate the nation's demand for senior care while providing the high quality of life that has made senior living an attractive long-term care option for older adults and their families. But as the nation's demographics shift and the healthcare arena constantly changes, the industry faces challenges but also opportunities to partner with policy makers and regulators to meet the rising demand for resident-centered senior living communities. Argentum is an association built for the future and has crafted a look at key issues facing the industry over the next 10 years: Workforce Development, Quality Improvement, Operational Excellence, Consumer Choice (saving for retirement), and Memory Care. By collaborating with stakeholders in senior living, healthcare, academia, business, government and elsewhere, Argentum focuses on these five critical imperatives to craft new initiatives, partnerships and goals to ensure the nation's aging population can experience quality service, independence, dignity and respect.

Presented by: **James Balda**

James Balda is President & CEO of Argentum where he is responsible for the overall leadership of the association and with transforming its vision and mission to meet the changing needs of the senior living industry. Under James' direction, Argentum has successfully implemented a new and more inclusive membership model, rebranded the association to reflect the evolving landscape of the senior living industry, launched a foundational set of quality standards and developed an executive director credentialing program designed to further professionalize the senior living industry. He joined Argentum in January 2015 when the organization was known as the Assisted Living Federation of America. He spent 2015 touring the country meeting with senior living executives, policymakers, academics, and other

continued

advocates for older adults to better understand the industry's key imperatives and to help define Argentum's role in shaping a healthy, robust future for senior living. Prior to his work with Argentum, Balda served in several roles at the National Restaurant Association where he was responsible for business development, product strategy, and membership. He also was charged with transforming the association's brand, marketing and communications activities, and state partner relationships. Additionally, Balda was Senior Vice President of Membership and Professional Development at America's Health Insurance Plans. He holds a bachelor's degree in english from the University of Maryland and lives in Northern Virginia with his wife and four children.

4:45 pm

DINNER ON YOUR OWN

6:30 – 8 pm

WELCOME RECEPTION & SILENT AUCTION

Location: Great Lakes BC

Join NARA and fellow industry peers for a relaxing evening of light appetizers and beverages. This event is included in conference registration and all are encouraged to attend. Silent Auction bidding will close at 8 pm.



September 28
11:30am — 12:30pm EST

The Importance of Key Indicators & Risk Assessment in New National ECE Monitoring System

Presented by: Dr. Rick Fiene

Missed past webinars?
 Purchase the recordings at naralicensing.org

7:30 – 8:15 am

SPEED NETWORKING & CONTINENTAL BREAKFAST

Location: Great Lakes A1

Connect with regulatory professional across North America. Whether you're looking for advice from other jurisdictions or simply would like to meet other regulators, this session will give you the chance to make valuable connections to last throughout the year. Both veteran and first time attendees will hone networking skills and gain new contacts and friends in the process.

8:30 – 10 am

KEYNOTE PRESENTATION



Applying a Social Justice Lens to Your Work & Life

Location: Great Lakes BC

If someone said “don’t think about the color red,” what’s the first thing you’d think of? In that same way, when we’re made aware of the lenses through which we see the world, it’s hard not to think about them. In this keynote, Sam will provide you with a social justice lens (or sharpen yours, if you bring it with you), and other tools that will help you identify injustice, and advocate for justice, in all aspects of your life. Sam will also talk about the components of gender, how they fit together, and how we can be more aware of them to create spaces that are comfier for folks of all genders.

Presented by:

Sam Killerman

Sam Killermann is a multi-disciplinary artist who puts his gifts to work to achieve global justice as the Director of Creativity for hues. Sam is also the person behind It's Pronounced Metrosexual, the comedy show performed at colleges and universities, as well as the online resource, which has educated millions of readers on themes of social justice, gender, and sexuality.



Sam is the author of A Guide to Gender, which is an exploration of gender from a social justice perspective, with humor and comics sprinkled in. The book opened as the #1 bestseller in gender on Amazon, and as a reflection of Sam's commitment

continued

to access as a core social justice value, he's given away over 10,000 copies of the book. He gave a well-received TEDxTalk that has over 200,000 views called "Understanding the Complexities of Gender," where he distilled the themes of the book into a few minutes of fun, energetic, and easily-digestible speech.

10:15 –
11:45 am

CONCURRENT SESSION D

D1



Code of Ethics for Regulators

Location: Lake Calhoun

Inherent in the use of authority is the potential for abuse of authority. Public trust and consumer confidence and respect require that regulators use their authority with integrity. This session will discuss The Code of Ethics for regulators, explore issues of competency, regulator expectations, prohibited actions and maintenance of professional appearances.

Presented by:

Becky Fleming-Siebenaler

Becky Fleming-Siebenaler has over 25 years experience as a licensing specialist, a supervisor/program manager and most recently as a regulatory bureau chief. In this position, she oversaw the licensing activities and all programmatic programming for child care, health care facilities, youth residential care, CD facilities, and mental health facilities in the State of Montana. Becky is an experienced national and local trainer, strategic planning specialist and policy developer. She trains using principles of adult learning and engage groups in such a way that all learning styles benefit.

D2



Best Practices In Human Care Regulation Project

Location: Great Lakes A2

States will share their experience with the Best Practices Project that was conducted in partnership with NARA and the National Center for Early Childhood Quality Assurance (NCECQA). The self-assessment process along with the strategic goals identified and what next steps they have taken to improve and align their program with the Best Practices model.

Presented by:

Deborah Russo, Kristie Lewis, Lisa Clifford and Beverly Goodman

Deborah Russo was a past director of child care licensing and background screening for state of Florida for over 20 years. She was past president of NARA; board member from 2006 - 2014; and NARA consultant and certified Project Manager.

Kristie Lewis is the assistant commissioner for child care services at the Georgia Department of Early Care and Learning (DECAL) and serves as the state co-administrator for the federal Child Care and Development Fund. Kristie has worked in child care since the early 1990s beginning as a child care preschool teacher and a child care learning center director. She joined state government as a regional licensing consultant with the Georgia Office of School Readiness, the predecessor

of DECAL. With DECAL she has served various leadership roles including applicant services unit director, licensing regional director, and child care services director. She was appointed assistant commissioner for child care services in 2013 responsible for over 100 child care licensing consultants who monitor and support the almost 5,000 child care programs in Georgia.

Lisa Clifford is the child care facility manager for Indiana and holds an associate's degree in early childhood education and a bachelor's degree in elementary education. Before starting her work at the State of Indiana, Lisa spent 12 years gaining experience in all aspects of running and owning a licensed child care center. Lisa has worked with the State of Indiana for the past 18 years. Five of those years were as a center licensing consultant and the past seven years as child care manager. Since starting with the State, Lisa has assisted in the promulgation of new rules for licensed child care centers and the Provider Eligibility Standards for CCDF, assisted in writing the Interpretive Guide for licensed child care centers, unlicensed registered child care ministries and the voluntary certification program for Indiana. Lisa was also involved in the Quality Rating System Indiana rolled out in 2008.

Beverly Goodman has been with the State of Alabama Department of Human Resources Child Care Services Licensing Division for 26 years. She was a child development consultant for 18 years; and, a human resources program supervisor for eight years for both home day cares and day care centers. In 2009, Beverly assisted with the major project of bringing all home day cares in the sixty-seven counties under the supervision of the State of Alabama Department of Human Resources. She is very active within the department in providing training for child care and as an advocate for child day cares in Alabama.

D3



When Safe Can Become Too Safe? The Need for Risk

Location: Great Lakes A3

In our attempt to protect children, licensing works hard to minimize risks to children in care. Licensing is often accused of over regulating licensees or not doing enough to protect children when an unfortunate incident occurs. But we rarely consider if our actions are harmful to children's development. This session will explore the critical need for "risk" in children's lives and what can happen if children are not exposed to risk. How licensing through its rules and licensing staff's interpretations can foster or harm children's risk taking skills will also be discussed. Other cultures will be touched on that allow risk as an going part of their childrens' day.

Presented by:

Jacqueline A Wood

Jacqueline Wood has over 30 years experience in the field of human service regulation and early childhood education, the majority in child care licensing. This experience includes directing all Michigan child care licensing field operations, as well as developing and leading professional development activities for licensing staff. Her experience further includes serving as a past member of NARA's Board of Directors and as a past NARA trainer. She has been an Early Childhood Consultant with the Michigan Department of Education working with early childhood programs and teaching early childhood professionals, at local community and university levels.

Since her retirement from state government, she has spent her time advocating for the needs of young children and working with children at local elementary schools. She travels to other countries, visiting their schools and early childhood centers whenever a chance arises. Jacqueline has degrees in education and child development with advanced work in effective teaching and learning.

D4 ●

Music & Memory
Location: Great Lakes A1

Music and Memory is a person-centered, personalized music program, which meets the participant where they are, regardless of their level of cognition or ambulation. Discover the difference that personalized music can make for individuals who have a dementia diagnosis, physical challenges, chronic pain or depression. One of the missions of regulatory/licensing agencies is to seek ways to promote quality health care and improve the quality of life of people that live in the setting we regulate, the Music & Memory program is a evidence based program that enables the residents to reconnect, regain social skills and live more fully.

Presented by: **Julie Hyland and Dan Cohen**

Julie Hyland has a Bachelor in Business Administration from Edgewood College and was introduced to Music and Memory while working for the Wisconsin Department of Health Services. She joined Music and Memory to establish a Student Volunteer Program to educate and create intergenerational volunteer opportunities for high school and college students in Wisconsin.

Dan Cohen, MSW, is founder and Executive Director of Music and Memory, a nonprofit that promotes the use of personalized music to improve the lives of the elderly and infirm, while improving staff morale and reducing turnover. "Alive Inside: A Story of Music & Memory," a Sundance Audience Award-winning documentary, is its inspirational story. Music and Memory operates in more than 3,000 long-term care communities, hospices, hospitals, and home care organizations across the U.S. and abroad.

D5 ● ● ●

Flying Under the Radar... Responding to Struggling Programs
Location: Lake Harriet

As regulatory compliance converges with risk, social media and competitive markets there can be a tendency for residential treatment providers to under report challenges both internally and externally. Programs that see regulatory oversight as adversarial are particularly at risk to attempt to avoid reporting which often results in an escalation of problems. This presentation reviews the mistakes and successes of collaboration between regulators and operators from a solution-focused lens that can aid consumers, regulators and program operators.

Presented by: **Kimball DeLaMare, LCSW, and Diane Moore**

Kimball DeLaMare, LCSW, is a licensed clinical social worker with over 30 years of experience in the management of therapeutic programs that serve troubled adolescents, young adults, and their families. He is the co-founder of eight different treatment programs, the founding Board President of the National Association of Therapeutic Schools and Programs (NATSAP), and currently supports programs that belong to InnerChange. Kimball is a past member of the Joint Commission Youth Advisory Council and a member of various state and national committees that review and develop standards. Kimball started his career in community mental health and counseling and continues to work with young adults, teenagers and their families in various settings. He has visited over 400 different treatment programs nationally and internationally in the past 20 years.

Diane Moore has served as the Director of the Office of Licensing within Utah's Department of Human Services since 2014. Prior to that she worked for over 20 years in Utah's public child welfare system where she was the Salt Lake Valley Region Director administering over nearly half of Utah's child welfare services within the state's most metropolitan region. Her priorities have always been to create safety and well being through the least restrictive, most effective, and implementable interventions possible. Her motto of always leaving people, things, and situations better than you find them is the driver behind her focus on continuous quality improvement. Diane holds a master's degree in public administration from Brigham Young University.

12 –
1 pm

NARA LUNCHEON & MEMBERSHIP BUSINESS MEETING

Location: Great Lakes BC

1:15 –
2:45 pm

CONCURRENT SESSION E

E1 ● ● ●

The Principles of Documentation: Document, Document and Document Again
Location: Lake Calhoun

This session will discuss the importance of documentation, one method of writing statements of deficiency, what is considered an acceptable plan of correction and a general discussion about enforcement strategies and the type of writing that is necessary for those strategies to be effective.

Presented by: **Becky Fleming-Siebenaler**

continued

Becky Fleming-Siebenaler has over 25 years experience as a licensing specialist, a supervisor/program manager and most recently as a regulatory bureau chief. In this position, she oversaw the licensing activities and all programmatic programming for child care, health care facilities, youth residential care, CD facilities, and mental health facilities in the State of Montana. Becky is an experienced national and local trainer, strategic planning specialist and policy developer. She trains using principles of adult learning and engage groups in such a way that all learning styles benefit.

E2

Preventing Children’s Exposures to Environmental Health Hazards: Emerging Initiatives
Location: Great Lakes A3

Many of our nation’s youngest children spend 40+ hours every week in an early learning environment where they may routinely be exposed to a variety of environmental health hazards. The Children’s Environmental Health Network in partnership with the National Association for the Education of Young Children, the Association for Early Learning Leaders, the National Association for Family Child Care and state Quality Rating Improvement Systems are working to reduce children’s exposures to environmental toxicants commonly found within child cares.

Presented by: **Robin Joseph, MPH**

Robin Joseph is the Eco-Healthy Child Care® (EHCC) Engagement Manager for the Children’s Environmental Health Network. She supports the national expansion of the EHCC program. With a master’s degree in environmental and occupational health, a bachelor’s degree in environmental toxicology, and experience working within the U.S. Environmental Protection Agencies Office of Children’s Health Protection, Robin is aware of the strategies to protect children from chemicals in their everyday environments. With the desire to improve children’s health through environmental education, Robin has developed and conducted several national, state, and local trainings on children’s environmental health.

E3

Supporting Provider’s Compliance with Regulations
Location: Lake Minnetonka

All licensing agencies want child care providers to succeed. During this session, we’ll discuss strategies that licensing agencies can use to support providers’ compliance with regulations. This includes increasing the transparency of the inspection process, encouraging providers to report incidents, implementing a fair and transparent enforcement system, thoughtful and inclusive regulation revision, and supportive training and technical assistance. We’ll share newly developed resources, successful strategies from other sectors, and promising state examples.

Presented by: **Nina Johnson and Nancy vonBargen**

Nina Johnson has over 20 years of experience in the early childhood field, including direct care provision, research, educational software development, policy analysis and program administration. Nina currently provides technical assistance to states and territories on several topics – including practices and policies related to licensed and license-exempt care - as a Senior TA Specialist with the National Center on Early Childhood Quality Assurance.

Nancy vonBargen has more than 35 years of experience in the field of child care administration and technical assistance (TA) services and has focused on improving child care services that address the needs of all children. Nancy has extensive experience conducting analysis and synthesis of information; promoting collaboration across programs, agencies, or funding sources; developing written TA materials; and providing and facilitating training, consultation, and meetings. She has given presentations at many national events, primarily in the areas of quality rating and improvement systems (QRIS) and licensing.

E4

Effective Licensing Plan of Correction Practices
Location: Great Lakes A2

This expert panel discussion with regulators from multiple states will address best practices and common pitfalls in the licensing plan of correction process. What are the essential elements of a effective plan of correction? How can regulators ensure plans of corrections will not only address the immediate violations found, but prevent any future occurrences, resulting in increased health, safety and well-being protections for the vulnerable populations served. Explore plan of correction methods that can help improve the overall quality of licensing of your agency.

Presented by: **Sheila Page, Lisa Turtle, Alfred Johnson and Tom van der Veen**

Sheila Page has worked with Pennsylvania Department of Human Services, Bureau of Human Services Licensing since 2007 serving as a Program Analyst, Regional Licensing Administrator, and as the Western Regional Director for over five years. She is currently the Director of Operations. Her work experience includes several years as Program Administrator for Allegheny County Department of Human Services. Sheila is a graduate of the University of Pittsburgh Graduate School of Public and International Affairs, earning a master’s degree in public administration.

Lisa Turtle has a bachelor’s degree in special education/elementary education Child Care Licensing Caseworker for the Cherokee Nation of Oklahoma. Lisa has worked for the Cherokee Nation of Oklahoma for 26 years., with 25 years experience in Child Care Licensing. She monitors daycare centers and daycare homes that are state licensed and have a contract with the Cherokee Nation Child Care Program as well as relative provider homes which consist of grandparents, aunt and uncle. Lisa serves on the Headstart Education Advisory Board as well as the Headstart Community & Family Partners Advocacy Board. Lisa is a member of the National Association for Regulatory Administration as well as the National Indian Child Care Association

continued

Alfred C. Johnson is a 1995 graduate of the University of Wisconsin-Oshkosh with a bachelor's degree in human service. Alfred has served in various staff and management capacities in private industry and county government serving vulnerable populations since 1996, including serving as director of admissions and director of therapeutic recreation for a state-licensed ICF/MR. Alfred has worked for the Division of Quality Assurance since 2001. Alfred has served the Division of Quality in a variety of roles including: assisted living surveyor, assisted living regional director, director of the bureau of technology, licensing and education and currently director of the bureau of assisted living. Alfred is a 2006 graduate of the State's Enterprise Leadership. While in DQA, Alfred has been instrumental in establishing collaborative statewide working relationships with counties, care management organizations, advocates and industry representatives to help improve the quality of care in assisted-living settings.

Tom van der Veen helps Child Caring Agencies to be successful and keep children safe and healthy. He believes regulatory compliance is fundamental to organizational success. Tom started his career working directly with children and youth. Since then he has worked as a supervisor, manager, director, consultant, board member, and leader; always promoting child safety and well-being. Tom is a proud NARA Member and serves on the Board of Directors. He has over 16 years of experience working with the State of Oregon and occasionally works as a consultant regarding regulatory and other professional issues. Tom holds a bachelor's degree in psychology from Simpson University.

Shawnell Johnson has worked with Bright from the Start: Georgia Department of Early Care and Learning for seven years. She is currently serving in the Child Care Services Licensing Division.

F2



Risky Business: Health and Safety Monitoring in Child Care and Child Welfare Programs
Location: Lake Calhoun

A discussion on child care and child welfare program health and safety administration and oversight. With the increased attention on child care health and safety through the 2014 Reauthorization of CCDBG and the changing nature of how residential services are structured and utilized in child welfare, PCG presents some challenges and solutions for improved childcare and residential monitoring.

Presented by:

Jennifer MacBlane and Tina Chen-Xu

Jennifer MacBlane is a Senior Advisor, with PCG. She has over 20 years of experience in human services, government and government consulting. She has been employed by PCG for 10 years and she specializes in child welfare and human services program administration and evaluation. She recently worked with the Office of the Child Advocate in the Commonwealth of Massachusetts to improve oversight of residential schools by identifying programmatic factors that are most closely associated with safety and positive outcomes for children and making recommendations for improved data collection and sharing between seven oversight agencies. She recently began work with the State of Maine Department of Health and Human Services to perform a comprehensive assessment of violence prevention services and develop a strategic plan that identifies short- and long-term strategies for service delivery, program outcomes, and program administration. Before PCG, Jennifer worked as the Budget Manager for the Commonwealth of Massachusetts Department of Children and Families, where she forecasted and tracked expenditures of approximately \$750 million across administrative and program accounts. She also served as an Assistant Budget Director at the Commonwealth of Massachusetts Executive Office for Administration and Finance where she oversaw spending in the areas of public safety, corrections, healthcare, housing and the environment. Early in her career, Jennifer worked as a residence supervisor in a domestic violence shelter and worked at a neighborhood center providing case management services to families at risk of foster care.

Tina Chen-Xu is a Consultant at PCG and brings expertise in early childhood education and child care health and safety systems design. Tina's early childhood education work focuses on assisting states and organizations with the range of quality improvement and monitoring programs including, quality rating improvement system (QRIS) analysis and identification of provider professional development needs; kindergarten entry assessment implementation and design, and Head Start and child care licensing standards. She is currently leading an engagement with the State of Washington's Department of Early Learning to design, implement and analyze a survey to determine risk assessment weights for the draft aligned child care safety regulations. The risk weights and draft regulations will move into

3 –
4:30 pm

CONCURRENT SESSION F

F1



Bridging the Gap Between Child Care Providers and Licensors Through Professional Development
Location: Great Lakes A2

Consistency in interpretation of licensing rules is essential for an effective licensing agency. Achieving consistency across inspectors throughout the state is difficult to achieve and maintain. The presenters will describe how Georgia uses a specialized unit to support the bridge between program compliance and program quality. The unit is designed to support professional development of licensing inspectors to deliver high quality visits to ensure child care providers are in compliance with rules and regulations, and embedding national best practices to improve the quality of child care environments. In this session participants will learn how to provide internal technical assistance to licensing inspectors, develop a streamlined on-boarding system, and create professional development activities to engage licensers.

Presented by:

Dana Bond Morrison and Shawnell Johnson

Dana Bond Morrison has worked with Bright from the Start: Georgia Department of Early Care and Learning for eight years. She is currently serving in the Child Care Services Licensing Division.

a public comment and review period into the fall of 2017 before finalization. In the Commonwealth of Massachusetts, she led the child care licensing redesign as the project manager for the Differential Licensing Initiative with the Department of Early Education and Care (EEC). Over a two and a half year period, PCG has facilitated the initiative through three subcommittees of EEC licensing staff and department leadership. PCG facilitated the research, design, and implementation of the agency's new differential monitoring tools, two pilots an evaluation, and creation of the new business processes and specifications for the supporting IT system. In addition, she has worked with states to assess the overall child care subsidy system to identify the gaps and needs from the system stakeholders including providers, families and children.

F3 ●

Professional Development and Skill Building for Successful Child Care Licensing Inspectors
Location: Lake Harriet

Preparing licensors to perform successful inspections, communicate with providers and provide technical assistance is a critical responsibility of child care licensing agencies. Learn how licensor competencies can inform licensor training objectives. Explore the key elements of a comprehensive training and professional development program that can provide licensors with a solid foundation in regulatory practice. Identify training delivery practices that help develop the skills needed to interpret and apply regulations, assess risk, determine compliance, and document inspection results. The audience will have an opportunity to discuss licensor training plans and share achievements and common challenges in developing successful child care licensing inspectors.

Presented by: **Michele Adams**

Michele Adams is a senior technical assistance specialist with NCECQA. She has 30 years experience in child care regulation with the state of Texas. She held a wide variety of positions including licensing inspector, investigator, manager, policy director and assistant commissioner. Michele lead the development of minimum standards for Texas child care, authored and delivered training to licensing inspectors, supervisors and child care providers.

4:45 – 5:30 pm

NARA PANEL

Location: Great Lakes A2

Come join the NARA Board President, Executive Director, and Committee Chairs to learn more about what we have been accomplishing, and what we are planning for the future. Bring your questions along so we can respond, and catch you up on the many happenings at NARA.

5:30 pm

DINNER ON YOUR OWN

8 – 8:30 am

CONTINENTAL BREAKFAST

8:30 – 10 am

CONCURRENT SESSION G

G1 ●

Exploring Two Models for Monitoring License Exempt Programs in Wisconsin
Location: Great Lakes A3

In Wisconsin, most license exempt child care programs must be certified in order to be eligible for child care subsidy payments. The certification program is administered through the county with state supervision. Programs that are operated by public schools have been required to comply with the licensing rules, but were not monitored for compliance. With the new requirements coming from the CCDBG that will affect public school operated programs we are implementing a new “licensing lite” procedure administered by the licensing agency. We will look at both monitoring programs; sharing the pros and cons of each system and lessons learned in the implementation process.

Presented by: **Anne Carmody and Jolene Ibeling**

Anne Carmody is the Child Care Program Specialist with Wisconsin's Department of Children and Families in the Bureau of Early Care Regulation. Anne works with the child care licensing rules in development and implementation. She provides training to licensing staff and child care providers on topics related to child care licensing. Anne has worked in the early childhood field for over 35 years. Anne worked in child care facilities in all capacities including director/administrator, teacher, assistant, cook and cleaning person. In addition, she helped persons interested in opening a child care center navigate the regulation path and worked as a licensing specialist, monitoring programs, investigating complaints and taking enforcement action when necessary.

Jolene Ibeling is a Program and Policy Analyst with Wisconsin's Department of Children and Families (DCF) in the Bureau of Early Care Regulation. Jolene oversees child care certification contracts, provides training and technical assistance to county and tribal certification workers, coordinates agency monitoring and develops rules, policies and procedures pertaining to certified child care. Jolene holds a master's degree in human and community resources in child and families studies and has worked in the field of early care and education for over 25 years. Prior to her current position with DCF, Jolene was a teacher and director in licensed child care settings, child care course instructor, a certified family child care operator, City of Madison Child Care Accreditation Program Coordinator and county child care certification regulator.

G2

**New York State's Lessons on Licensing: Improvements to the Process****Location: Lake Harriet**

Child care licensing can often be a lengthy and challenging process. New York State regulates 18,000 child care programs statewide and licenses approximately 2,000 new programs annually. Historically, it took close to 175 days for a program to get licensed. In this workshop, you will hear about some of our challenges and more importantly about our recent successes in streamlining the child care licensing process. Implementing new procedures resulted in a reduction in the timeframe for licensing by nearly 50%. New York State invites you to come hear about our successful strategies, which include the use of Lean principles, along with our plans for future progress.

Presented by:

Jim Hart

Jim Hart is the Director of Program Operations at the New York State Office of Children and Family Services, Division of Child Care Services. In this role, Jim is responsible for the overall management of the seven Division of Child Care Services regional offices that are responsible for the licensing and inspection activities of the nearly 18,000 state-regulated child care programs in New York State. Jim also provides oversight to a unit that provides support to the regional offices in the areas of policy, technical assistance, and regulatory enforcement. Jim has led several strategic initiatives during his tenure in the areas of technology, licensing and inspections. Jim's career in regulated child care began in 2000 and he has held several key supervisory and management roles within the Division. Jim is a graduate of St. Bonaventure University.

G3

**Promoting Regulatory Compliance in Child Care Centers in New York City, A New Approach****Location: Great Lakes A1**

The New York City (NYC) Department of Health and Mental Hygiene (DOHMH) launched a new regulatory strategy in November 2016 to promote regulatory compliance in 700 child care centers that are 'at-risk' for regulatory non-compliance. The goal of this presentation is to illustrate the impact of this new regulatory strategy in a large, diverse, urban setting. This approach demonstrates the value of promoting regulatory compliance, community engagement, and the provision of technical assistance as complementary goals.

Presented by:

Kelvin Chan, PhD, MTS, MPH

Kelvin Chan, PhD, MTS, MPH, is the Director of Early Childhood Development and the inaugural Director of the Compliance Promotion Unit of the NYC Department of Health and Mental Hygiene. In his current role, he develops regulatory strategies to promote healthy early childhood development across NYC, and leads a Unit focused on promoting compliance in child care services with an history of regulatory non-compliance.

G4

**State Systems Partnerships: Working Smarter, Not Harder****Location: Lake Minnetonka**

Come learn how the state of Wyoming has used a partnership between the Professional Development Registry to build a new licensing module to help increase the accuracy of shared data, reduce duplication, and increase the knowledge of the licensors out in the field. This also allows for improved QPR reporting, encourages facility administrators to the system, and a uniform process for tracking technical assistance.

Presented by:

Micca Burris

Micca comes from a background in early childhood, working in early childhood programs in a variety of roles before working for the state in licensing and accreditation. There she helped manage the licensing database and helped to rebuild the professional development registry. Now she manages five stage registries and one state licensing module at ChildCare Education Institute.

G5

**Report Writing Essentials****Location: Great Lakes A2**

Every inspection, licensing visit, survey, investigation, monitoring visit, review, etc. results in the production of a report. The report must communicate information effectively to the provider and others who need to know the findings of your review. This workshop will focus on what it takes to produce a report that is accurate, concise, thorough, clear, impartial and relevant - one that documents the investigative findings in a way that helps to ensure the safety and quality of care of individuals receiving services from licensed or contracted providers.

Presented by:

Victoria L. Flynn

Victoria L. Flynn has been the Director of the Office of Incident Management and Investigations with the Georgia Department of Behavioral Health and Developmental Disabilities for four years. A team of investigators is responsible for investigating deaths and other critical incidents of individuals receiving behavioral health or intellectual disability services in state psychiatric hospitals, an intermediate care facility for individuals with intellectual disabilities, two state skilled nursing facilities and a variety of community residential and day programs. Prior to assuming this position, Victoria served as the Director of the Personal Care Home Program for Georgia and was responsible for the inspection, licensing, regulation and enforcement activities statewide for over 2,700 assisted living facilities, personal care homes, and community living arrangements.

10:15 –
11:30 am

GENERAL SESSION & SEND OFF

CHARACTER DAY

Location: Great Lakes BC

Join NARA and millions around the globe for the fourth annual Character Day. There are already over 60,000 groups signed up to participate in this global conversation about the importance of developing and improving character (qualities like empathy, curiosity, grit, humility, bravery, social responsibility and more). We'll preview a short engaging film on the science of character, breakout into small group discussion and large group discussion.



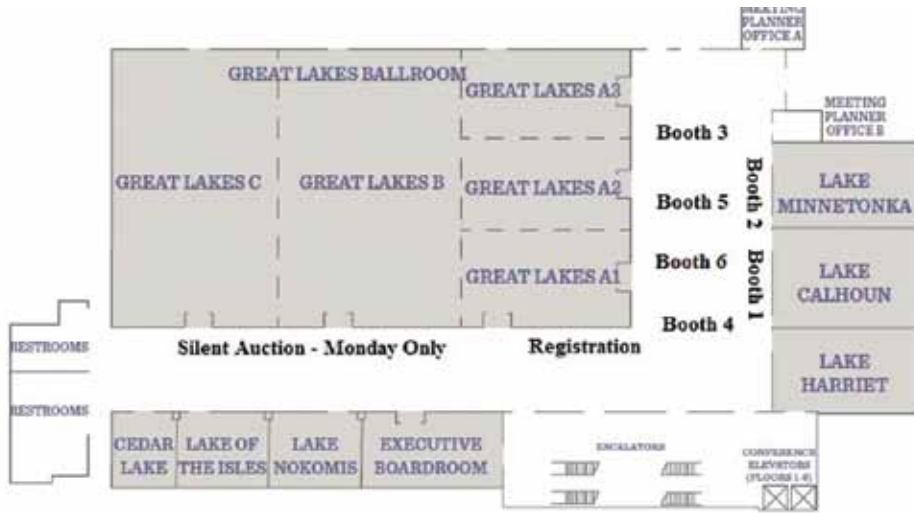
Simply remarkable service helping you reach new heights in program performance by leaps and bounds.

Always responsive and reliable...like having a superhero on your team.



Check out the Idaho presentation: Alternatives to Enforcement: Using Innovation and Information to improve Provider Performance.

EXHIBITOR DIRECTORY



Booth	Organization
Booth 1	JUMP Technology Services
Booth 2	TCC Software Solutions
Booth 3	National Center on Early Childhood Quality Assurance
Booth 4	NARA
Booth 5	University of Southern Main Muskie School of Public Service
Booth 6	NextApple LLC



National Association for Regulatory Administration

2017 Licensing Seminar

September 11—13, 2017 Minneapolis, Minnesota

Clock Hour Certificate of Attendance

Presented to:

Monday, September 11, 2017

Clock Hours

Keynote Speaker, Joe Schmidt	1.5
Session A: _____	1.5
Session B: _____	1
Session C: _____	1

Tuesday, September 12, 2017

Keynote Speaker, Sam Killermann	1.5
Session D: _____	1.5
Session E: _____	1.5
Session F: _____	1.5

Wednesday, September 13, 2017

Session G: _____	1.5
Closing General Session	1.5

Tara Lynne Orłowski
Tara Lynne Orłowski, M.Ed.
 NARA President

Jim Murphy
Jim Murphy
 NARA Executive Director



CELEBRATING

25 YEARS

OF LICENSING SEMINARS

- 2003.....Portland, ME
- 2004.....Nashville, TN
- 2005.....Albuquerque, NM
- 2006.....Oklahoma City, OK
- 2007.....Richmond, VA
- 2008.....Atlanta, GA
- 2009.....Park City, UT
- 2010.....Cincinnati, OH
- 2011.....Pittsburgh, PA
- 2012.....San Francisco, CA
- 2013.....St. Louis, MO
- 2014.....Orlando, FL
- 2015.....Boston, MA
- 2016.....Portland, OR
- 2017.....Minneapolis, MN
- 1995.....Baltimore, MD
- 1996.....Scottsdale, AZ
- 1997.....Burlington, VT
- 1998.....St. Pete Beach, FL
- 1999.....Indianapolis, IN
- 2000.....San Diego, CA
- 2001.....Pittsburgh, PA
- 2002.....San Antonio, TX

NARA LEADERSHIP

Name	Regulatory Area	Geographic Area	Position	Current Term
Tara Lynne Orlowski, M.Ed.	Child Care	South US (Florida)	President	07/15 – 12/20
Steven Eng	Adult Care, Child Care, Disability Care, Drug & Alcohol, MH/MR/DD	Canada (British Columbia)	President Elect	01/16-12/18
Christine Ross-Baze	Child Care, Child Welfare	Midwest US (Kansas)	Treasurer	01/15 – 12/17
Mike Boland	Child Care	South, US (Florida)	At-Large	02/17 - 12/17
Becky Fleming-Siebenaler	Adult Care, Disability Care, Child Care, Child Welfare	West US (Montana)	At-Large	01/15 – 12/17
Vickie Flynn	Adult Care, Disability Care	South US (Georgia)	At-Large	01/15 – 12/17
Alfred Johnson	Adult Care, Disability Care, Mental Health, AODA	Midwest US (Wisconsin)	At-Large	01/16-12/18
Donna Sabo	Adult Care, Disability Care, Child Care, Child Welfare	Midwest US (Ohio)	At-Large	01/16-12/18
Lisa Turtle	Child Care	Midwest US (Oklahoma/ Cherokee Nation)	At-Large	01/17 - 12/19
Tom van der Veen	Adult Care, Disability Care, Child Welfare	West US (Oregon)	At-Large	01/17 – 12/19
Sandra Wooters	Adult Care, Disability Care, Child Welfare	Northeast US (Pennsylvania)	At-Large	01/17 – 12/19

Ascend by TCC offers a comprehensive early childhood integrated data solution that includes Licensing Management and our **eXpedite** mobile inspection software to assist in ensuring the best care possible for our children and families.

Visit our booth in the Exhibit Hall for a hands-on demonstration.

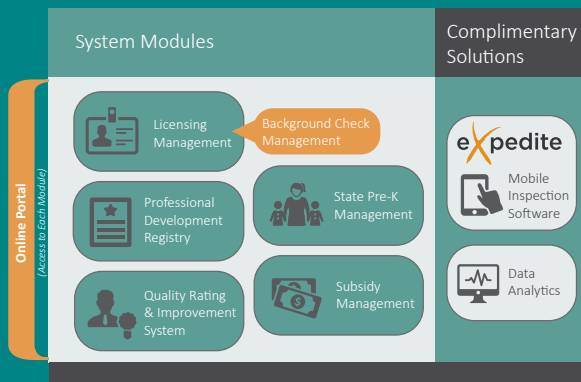


eXpedite is a technology solution that enables you to capture accurate and timely data using your own digital forms to make your processes more efficient and to keep your field working anywhere the job takes them.

Ascend's Licensing Module manages all functions of early childhood licensing:

- ◆ Role-based User Access
- ◆ Workflow Management
- ◆ Online Applications
- ◆ Background Checks
- ◆ Inspections
- ◆ Complaints
- ◆ Enforcement
- ◆ Renewals & Appeals
- ◆ Customizable Correspondence Templates

Complete Ascend Solution Modules



For more information, contact Mike Boyle at 317.625.2547 or by email at Mike.Boyle@e-tcc.com.



Florida Center for
Interactive Media
FLORIDA STATE UNIVERSITY



www.fcim.org

Custom
Web &
Mobile
Solutions

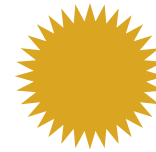
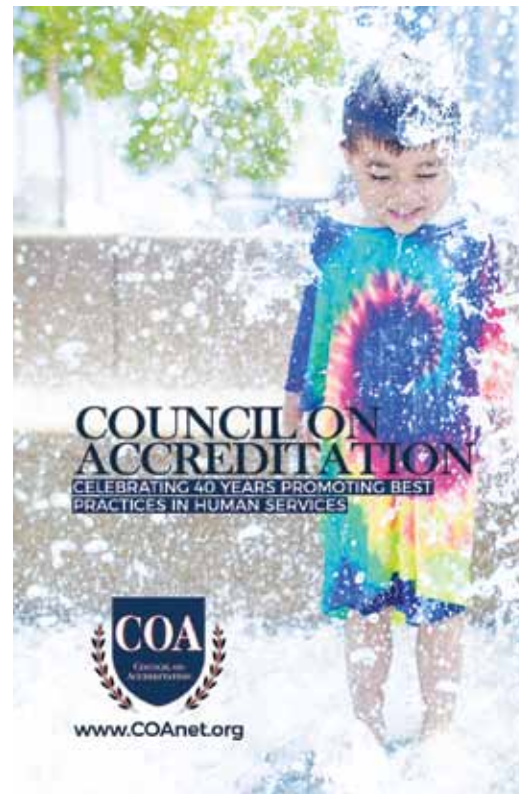
Course
Development

Graphic
Design

Audio &
Video

Data &
Reporting

**YOUR PARTNER IN
CUTTING-EDGE SOLUTIONS**



nara

National Regulatory Professional Credential

In a field where a standard degree does not exist, the NARA National Regulatory Professional Credential (NRPC) is the standard that validates the knowledge, skill, and abilities of staff to be competent as a professional in the human care licensing field.

Contact NARA today to train yourself or your staff and achieve the NRP Credential!

See you in Williamsburg, VA

September 24 – 26, 2018

The logo for the National Association of Regulatory Administrators (NARA), featuring the word "nara" in a lowercase, sans-serif font with a red curved line above it.

2018
LICENSING
SEMINAR

